



**PASSION
TO CREATE
WITH US**

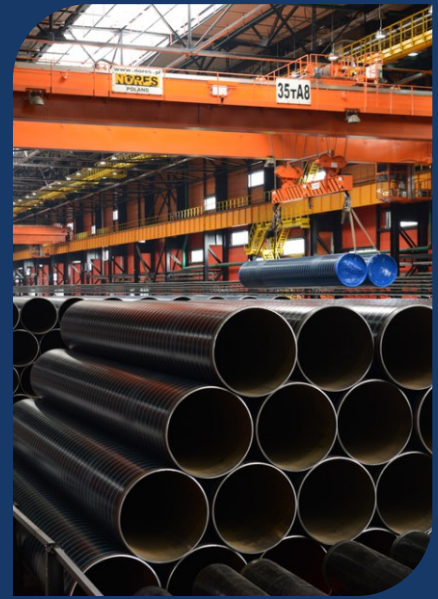


Website



About Astec Tubes

Astec Tubes is a reputed Manufacturer & Supplier of Alloy Steel Products, Carbon Steel Products, Inconel Steel Products, Stainless Steel Products etc. Our company was founded with the objective of offering top quality industrial products to clients. The products that we offer come from reliable sources in the industry. We have collaborated with experienced vendors and these vendors manufacture products by using top-notch raw materials and technology. These products are highly acclaimed by clients for various features. Moreover, we offer the entire range of products at competitive rates. By functioning with utmost sincerity, we have established a wide clientele across the whole country.



Quality Policy

Ever since our establishment, quality has always been one of the top priorities for us and we ensure to maintain it at every level of our business activities. Our quality control procedures begin right from the selection of authentic vendors in the market, who ensure to develop our products in compliance with the international quality standards. Furthermore, we have developed a separate quality management department, wherein all the procured products are religiously tested on well defined quality parameters. Our team of quality controllers is well-versed and qualified to check the products using various methods, so that the end products conform to set industry norms.

Our organization has always followed ethical practices and emphasized on transparent dealings to conduct our business. This has enabled us to achieve our ultimate goal of total customer satisfaction and maintain cordial relations with our valued clients. Apart from offering optimum quality range of Aluminum, Copper and Stainless Steel Products, at industry leading prices, we also provide our clients with complete technical and market information, so as to provide them utmost convenience. Our complete understanding of clients' specific requirements enables us to serve them in best possible manner. Further, due to our huge and well-coordinated distribution network, we deliver the ordered consignments within the stipulated time frame. We have also facilitated our clients with easy modes of payments so as to conduct hassle free monetary transaction with them. All these aspects have helped us garner long list of clients spread across the regions of Indian Subcontinent, East Asia, Middle East and South East Asia.

Pipe Fittings



Material

Stainless Steel, Duplex, Super Duplex, Inconel / Incoloy, Hastelloy, Monel, Nickel, Titanium, Cupro Nickel, Alloy Steel, Carbon Steel.

Types

Elbow, Tee, Cross, Reducer, Cap, Bend, Long - Short Stub End & many more

Grades

304, 304L, 304H, S32205, S32750, 600, 625, C22, C276, 400, 200, Gr 2, Gr 5, 90/10, 70/30, Wp5, Wp11, WP 22, WPHY 42, WPHY 60 & many more

Forged Fittings



Material

Stainless Steel, Duplex, Super Duplex, Inconel / Incoloy, Hastelloy, Monel, Nickel, Titanium, Cupro Nickel, Alloy Steel, Carbon Steel, Copper Forged.

Types

Elbow, Tee, Cross, Reducer, Cap, Bend, Long - Short Stub End & many more

Grades

304, 304L, S31803, S32750, 600, 718, C22, C276, 400, K500, 200, 201, Gr 2, Gr 5, 90/10, 70/30, F5, F22, A105, F42, F70, Copper, Brass & many more

Pipes



Material

Stainless Steel, Carbon Steel.

Types

Round Pipes, Square Pipes,
Rectangular Pipes, Seamless, ERW,
Welded, Fabricated, CDW

Grades

304, 304L, 304H, UNS S30403 &
many more

Flanges



Material

Stainless Steel, Duplex, Super Duplex,
Inconel / Incoloy, Hastelloy, Monel, Nickel,
Titanium, Cupro Nickel, Alloy Steel,
Carbon Steel.

Types

Flate Face (FF), Raised Face (RF), Ring
Type Joint (RTJ)

Grades

DIN 2527, 2566, 2573, 2576, 2641,
2642, 2655, 2656, 2627, 2628, 2629,
2631, 2632, 2633, 2634, 2635, 2636,
2637, 2638, 2673 & many more

Instrumentation Valves



Material

Stainless Steel, Duplex, Super Duplex, Inconel / Incoloy, Hastelloy, Monel, Nickel, Titanium, Cupro Nickel, Alloy Steel, Carbon Steel, Copper/Brass

Types

Manifold, Ball Valves, DBB Valve, Mini Needle Valves, Fluid Line Stop Valves & many more

Grades

304, 304L, 304H, 310, S31803, S32750, 600, 800, C22, C276, 500, Gr2, Gr5, F9, F22, & many more

Instrumentation Tube Fittings



Material

Stainless Steel, Duplex, Super Duplex, Inconel / Incoloy, Hastelloy, Monel, Nickel, Titanium, Cupro Nickel, Carbon.

Types

Seamless, Welded, Fabricated

Grades

304, 304L, S31803, S32205, S32750, 600, 800, C276, K500, 201, Gr 5, 70/30, & many more

Valves



Material

Stainless Steel

Working Pressure

Up to 6000 PSIG

Types

Manifold Valve, Gate Valves, Ball Valves, Butterfly Valves & many more

Grades

304, 316

Pressure Rating

150, 300, 600, 800, 1500

Fasteners



Material

Stainless Steel, Duplex, Super Duplex, Inconel / Incoloy, Hastelloy, Monel, Nickel, Titanium, Cupro Nickel and Carbon Steel.

Types

Bolts, Nuts, Washer, Hex Nuts, Screw, Stud Bolts U Bolts, Anchor Bolts & many more

Grades

304, 304L, 317H, S31803, S32750, 600, 625, C22, C276, 400, 200, Gr 2, Gr 5, 90/10, 70/30 & many more

Beryllium Copper Alloy Rods



Material

Copper

Types of Bars / Rods

Round, Square, Hex, Flat, Rectangular,
Forged.

Grades

C17200, C17500

Tantalum Rods



Material

Tantalum

Types of Bars / Rods

Round, Square, Hex, Flat, Rectangular,
Forged.

Grades

R05200, R05400, R05255, R05252,
R05240

Tungsten Alloy Rods



Material

Tungsten

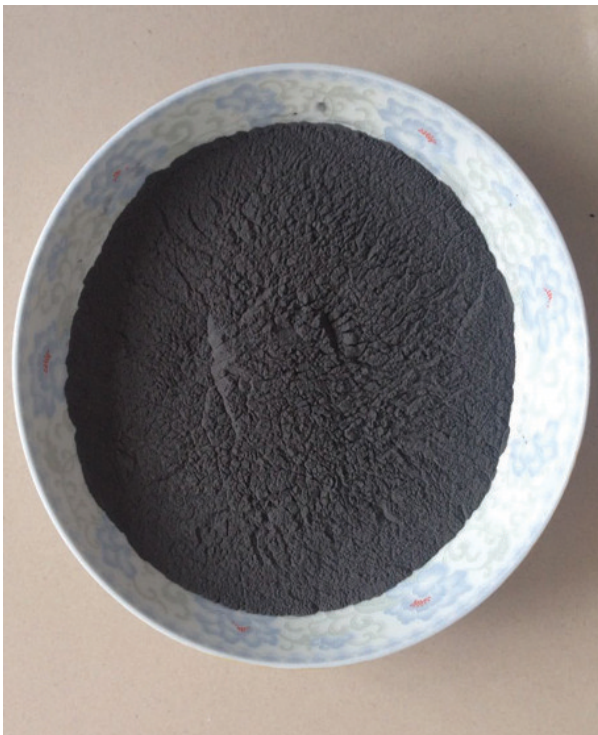
Types of Bars / Rods

Round, Square, Hex, Flat, Rectangular,
Forged.

Grades

R07031

Tungsten Powder



Material

Tantalum

Types

Standard, Crystalline, Granulated

Grades

R07031

Round Bars



Material

Stainless Steel, Carbon Steel, Alloy Steel, Nickel
Alloy, Tool And Die Steel, Titanium, Aluminum

Types

Round Bar

Grades

Stainless Steel Round Bar : AISI 301, 302, 303, 304, 304L, 310, 316, 316L, 317, 321, 347, 410, 416, 420, 430, 431, F51, F53, F55, F44, UNS S21800, Alloy 20, 904L, PH13-8Mo, 17-4ph, 15-5ph, 17-7ph, Ph15-7 Mo, 254Smo, Al-6Xn, 654SMO, duplex 2205, duplex 2507, nitronic ferralium 255

Carbon Steel Round Bar : ASTM A105 / ASME SA105, ASTM A350 LF2, LTCS.

Alloy Steel Round Bar : AISI 4130, 4140, 4142, 4145, 4150, 4320, 4330, 4340, 4350, 4620, 4820, 6150, 8620, 8630, 8822, 9310, 52100, HY80, HY100, 9315, 300M, Nitr alloy 135M, 17-22A, 42CrMoA, EN19, SAE 4140, En24

Nickel Alloy Round Bar : Nickel 200, Nickel 201, Monel 400, Monel K-500, Hastelloy C-22, Hastelloy C-276, Hastelloy C-2000, Hastelloy B, Nimonic 75, Nimonic 90, Nimonic 80A, Inconel 600, inconel 601, inconel 617, inconel 625, inconel 718, inconel 725, inconel X-750, incoloy 800, incoloy 800H, incoloy 800HT, Incoloy 825, Incoloy 926, Incoloy 890, Incoloy 925, Incoloy A-286, Udimet 500, Rene 41, Waspalloy, Invar 36, Invar 42, Stellite 6B, Kovar alloy

Tool And Die Steel Round Bar : AISI 6F7, AISI A2, AISI O1, AISI O2, AISI S7, AISI D6, AISI S1, AISI D2, AISI A6, AISI O7, AISI L2, H13, H11, H12, AISI L6, H21, H10, H10A, H19, 314, H19A, P20, P20+Ni, P20+S, S136, 718, SKT6, SKD12, SKD1, SKD2, SKS3, SKS41, SKS95, SKD11, DC53, SKS43, SKD61, SKD6, SKT4, SKD5, SKD7, SKD62, NAK80

Titanium Round Bar : 6AL4V, Commercially Pure, Grade 2, Grade 7 and Grade 12

Aluminum Round Bar : 2014, 2024, 2025, 2219, 2618, 3003, 5083, 6061, 7049, 7050, 7075, 7079, 7149, 7150, and 7175

FSS Scissel Coil



Material

Stainless Steel, Mild Steel.

Width

281MM , 373MM & 393 MM

HARDNESS

140 +/-5(HV 30)

Grades

SS 430 (ALL 400 SERIES)

Factory Photos





Corporate Office:

3/5 Sakar Bhavan Plot No No.1/a,
6th Khetwadi, Girgaon, Mumbai,
Maharashtra 400004, India.

Email:

sales@astectube.com

Phone No.:

+91-8080350133

